

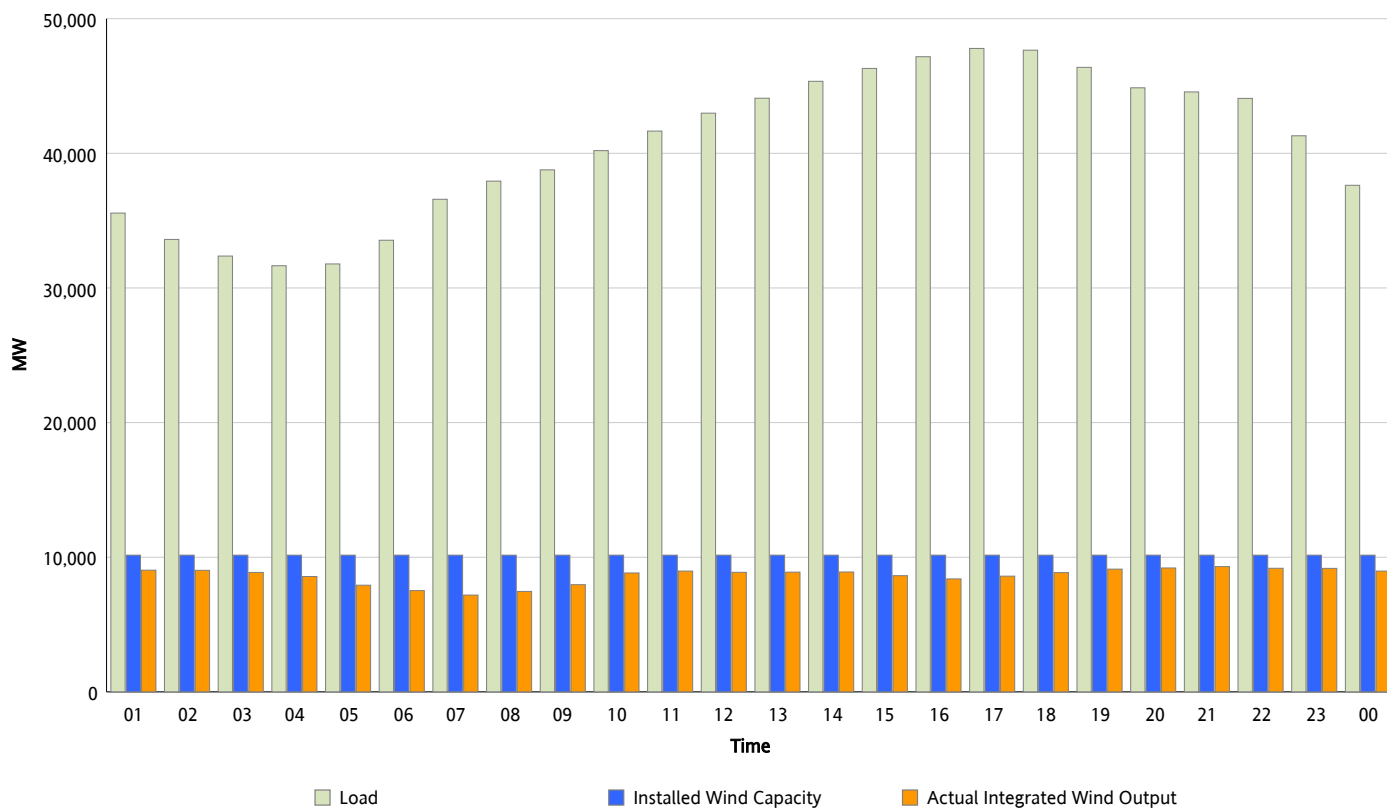


## ERCOT Grid Operations

### Wind Integration Report : 05/29/2013

Peak Load	47,792 MW
Load Peak Hour (HE)	17
Wind Over Peak	8,596 MW
Wind Record 05/02/13	9,674 MW
Max Wind Value*	9,416 MW
Wind Peak Time	20:44
Wind Integration %	21 %

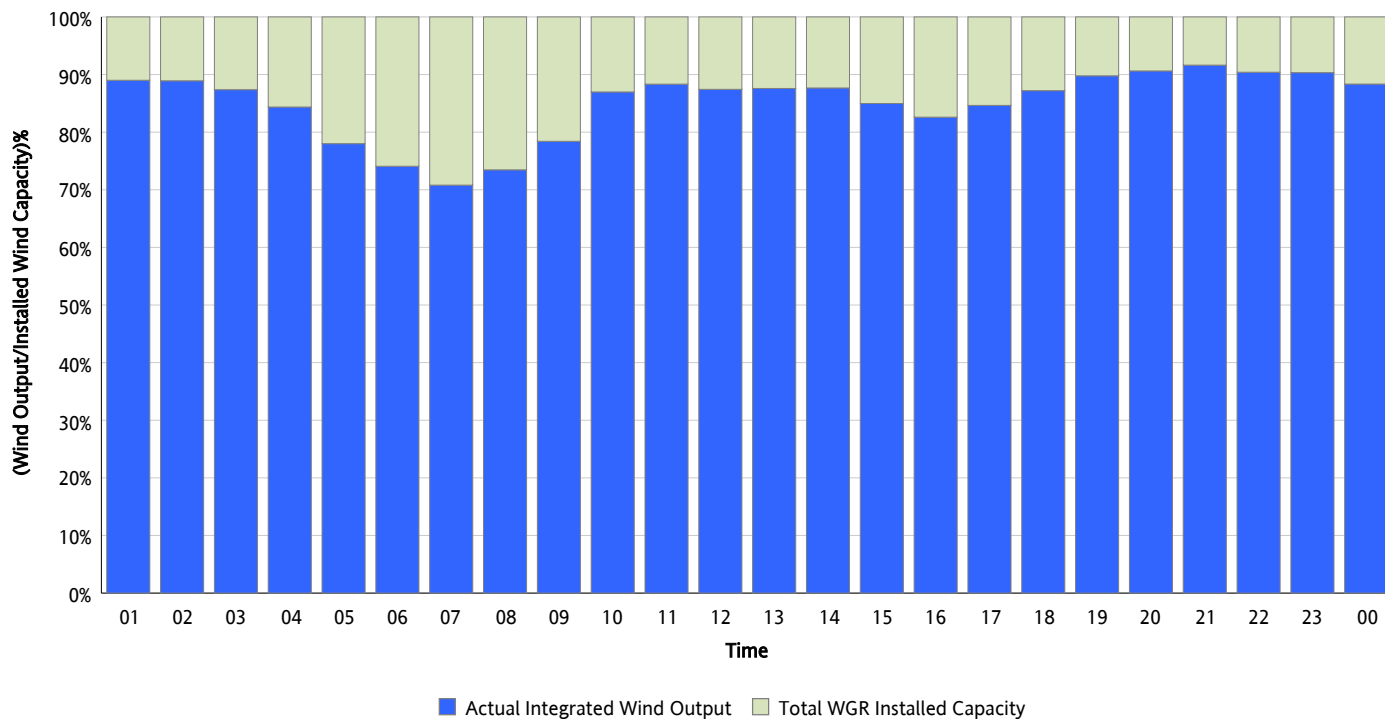
**Hourly Average Actual Load vs. Actual Wind Output**  
05/29/2013



\* Wind Record and Wind Max represent instantaneous values and the rest of the values are integrated over the hour

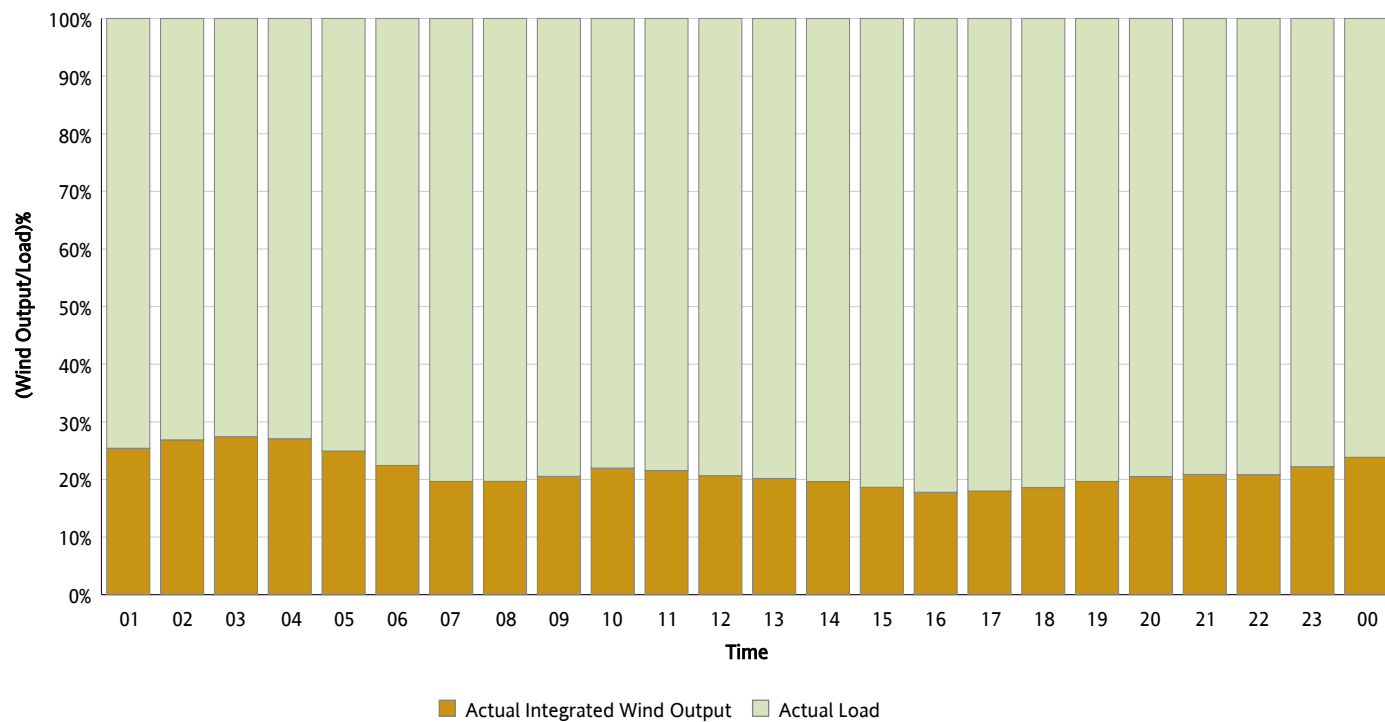
## Actual Wind Output as a Percentage of the Total Installed Wind Capacity

05/29/2013



## Actual Wind Output as a Percentage of the ERCOT Load

05/29/2013



## ERCOT Load vs. Actual Wind Output

05/22/2013 - 05/29/2013

